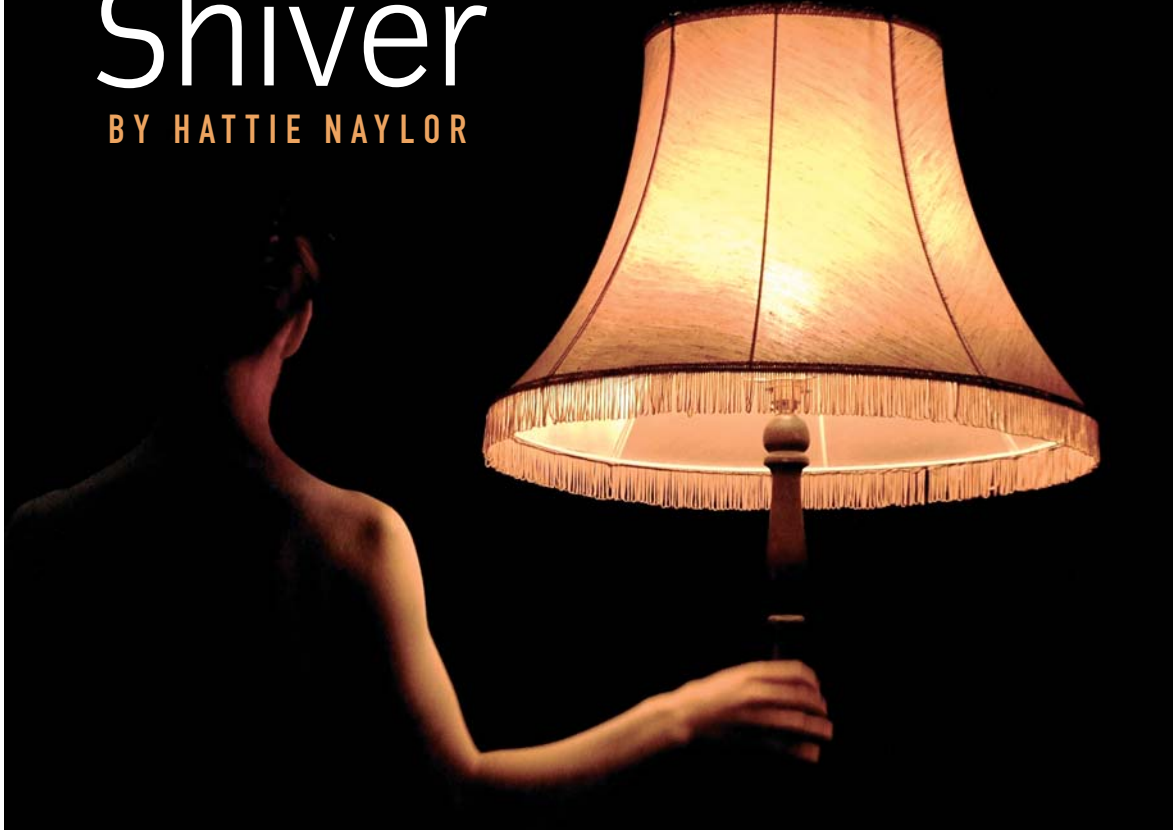


PLATFORM 4 PRESENTS

Shiver

BY HATTIE NAYLOR



A DARK FABLE OF LOVE AND LOSS

We gratefully
acknowledge
support from



PLATFORM 4 PRESENTS

Shiver

A DARK FABLE OF LOVE AND LOSS
INSPIRED BY THE MYTH OF MELUSINE



Matthew is dead. The last guest has left the wake, leaving his parents and young fiancée, Gwendolyn in the family home. No-one is sleeping; left in an uneasy limbo they try to make sense of what has happened. Will the truth come out? Has Matthew disappeared completely and why is Gwen spending so much time in the bath? A stylish, beautiful piece of theatre that shows how grief can make monsters of us all...

Platform 4 has developed a reputation for creating stunning visual theatre; blending text, movement and objects with evocative sound and light, to create unique theatrical gems.

“Poetic, moving and touching theatre” Total Theatre 2004

www.platform4.org

(Shivering is the body's response to lower body temperature and one of the beginning symptoms of hypothermia; you should end your dive if you begin to shiver).



Tour dates

16–18 Feb	Chesil Theatre, Winchester	7.45pm	01962 840440	
22 Feb	Norden Farm, Maidenhead	7.30pm	01628 788997	
25 Feb	Studio @ TPS, Petersfield	7.30pm	01730 261199	
28 Feb	Exeter Phoenix	8.00pm	01392 667080	
9 Mar	MAC, Birmingham	8.00pm	01214 403838	
16 Mar	Weymouth College Theatre	7.30pm	01305 208702	
22 Mar	Quay Arts, IOW	8.00pm	01983 822490	
24 Mar	Lighthouse, Poole's Centre for the Arts	8.00pm	01202 685222	
25 Mar	Lighthouse, Poole's Centre for the Arts	8.00pm	01202 685222	
6 Apr	The Riverfront, Newport	7.45pm	01633 656757	
7 Apr	Havant Arts	8.00pm	02392 472700	
20 Apr	Arc Theatre, Trowbridge	7.30pm	01225 766241	
27 Apr	Dorchester Festival at the Corn Exchange	8.00pm	01305 266926	
Apr	The Drill Hall, London (date tbc)	8.00pm	020 7307 5061	

Please call beforehand to make arrangements

Contains a minimal amount of swearing